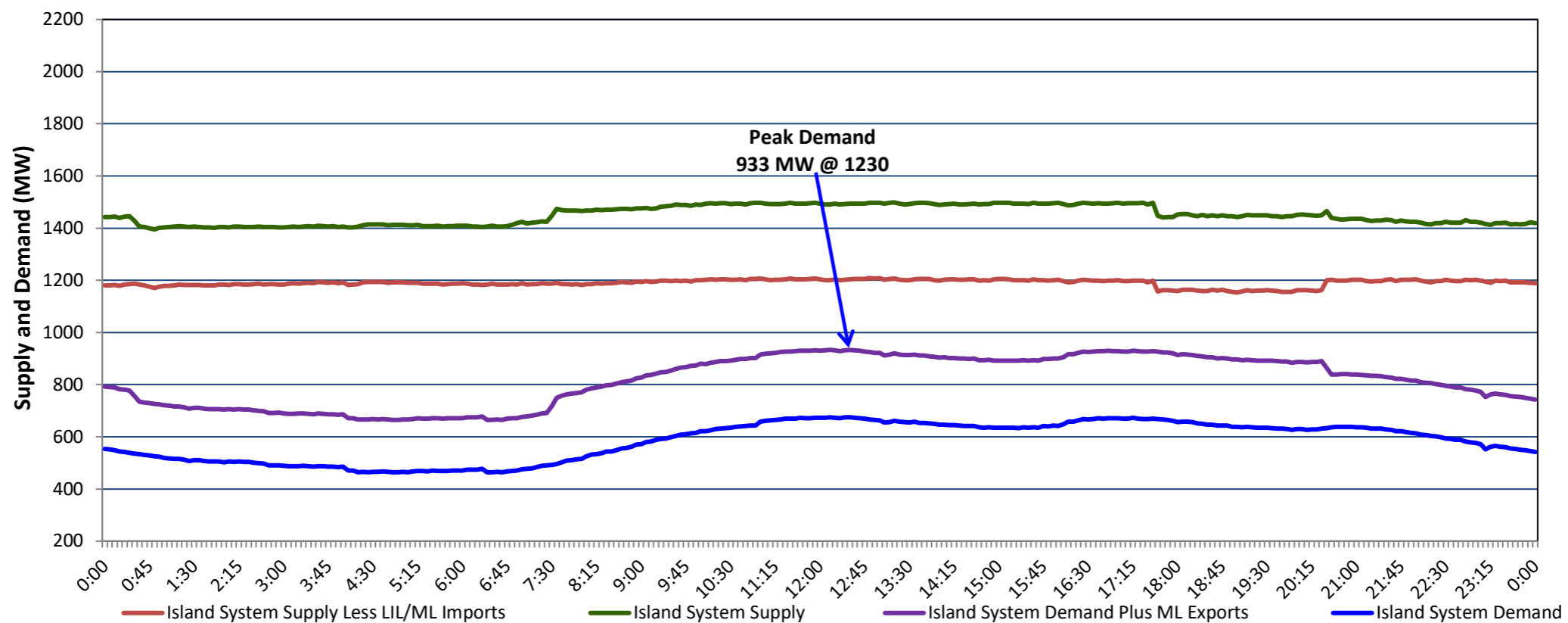


**Newfoundland Labrador Hydro (NLH)
Supply and Demand Status Report Filed Monday, August 14, 2023**

**Section 1
Island Interconnected System Supply, Demand & Exports
Actual 24 Hour System Performance For Saturday, August 12, 2023**



Supply Notes For August 12, 2023

- A As of 0701 hours, March 06, 2023, Upper Salmon Unit unavailable (84 MW).
- B As of 0800 hours, May 21, 2023, Holyrood Unit 2 unavailable due to planned outage (170 MW).
- C As of 0903 hours, June 29, 2023, St. Anthony Diesel Plant available at 8.85 MW (9.7 MW).
- D As of 0856 hours, July 01, 2023, Holyrood Unit 3 available but not operating (150 MW).
- E As of 0800 hours, July 09, 2023, Holyrood Unit 1 unavailable due to planned outage (170 MW).
- F As of 2059 hours, July 13, 2023, Stephenville Gas Turbine unavailable (50 MW).
- G As of 2238 hours, July 25, 2023, Bay d'Espoir Unit 6 unavailable (76.5 MW).
- H As of 0822 hours, August 06, 2023, Bay d'Espoir Unit 7 unavailable due to planned outage (154.4 MW).
- I At 1737 hours, August 12, 2023, Granite Canal Unit unavailable (40 MW).
- J At 2025 hours, August 12, 2023, Granite Canal Unit available (40 MW).

**Section 2
Island Interconnected Supply and Demand**

Sun, Aug 13, 2023	Island System Outlook ³		Seven-Day Forecast	Temperature (°C)		Island System Daily Peak Demand (MW)	
				Morning	Evening	Forecast	Adjusted ⁷
Available Island System Supply: ⁵	1,445	MW	Sunday, August 13, 2023	16	18	985	985
NLH Island Generation: ^{4,8}	835	MW	Monday, August 14, 2023	17	16	970	970
NLH Island Power Purchases: ⁶	135	MW	Tuesday, August 15, 2023	16	18	735	735
Other Island Generation:	200	MW	Wednesday, August 16, 2023	16	15	740	740
ML/LIL Imports:	275	MW	Thursday, August 17, 2023	15	13	735	735
Current St. John's Temperature & Windchill:	16 °C	N/A °C	Friday, August 18, 2023	15	17	750	750
7-Day Island Peak Demand Forecast:	985	MW	Saturday, August 19, 2023	15	15	715	715

Supply Notes For August 13, 2023

- Notes:
1. Generation outages for running and corrective maintenance are included. These are not unusual for power system operations. They generally do not impact customer supply. The power system operators schedule outages to system equipment whenever possible to coincide with periods when customer demands are low and sufficient supply reserves are available. However, from time to time equipment outages are necessary and reserves may be impacted.
 2. Due to the Island system having no synchronous connections to the larger North American grid, when there is a sudden loss of large generating units there may be a requirement for some customer's load to be interrupted for short periods to bring generation output equal to customer demand. This automatic action of power system protection, referred to as under frequency load shedding (UFLS), is necessary to ensure the integrity and reliability of system equipment. Under frequency events have typically occurred 5 to 8 times per year on the Island Interconnected System and the resultant customer load interruptions are generally less than 30 minutes. With the activation of the Maritime Link frequency controller during the winter of 2018, UFLS events have occurred less frequently.
 3. As of 0800 Hours.
 4. Gross output including station service at Holyrood (24.5 MW) and improved NLH hydraulic output due to water levels (35 MW).
 5. Gross output from all Island sources (including Note 4).
 6. NLH Island Power Purchases include: CBPP Co-Gen, Nalcor Exploits, Rattle Brook, Star Lake, Wind Generation and capacity assistance (when applicable).
 7. Adjusted for curtailable load, market activities and the impact of voltage reduction when applicable.
 8. Due to limitations inherent in the design of combustion turbines, the output of combustion turbines may be reduced in the event that ambient temperatures exceed the threshold

**Section 3
Island Peak Demand Information
Previous Day Actual Peak and Current Day Forecast Peak**

Sat, Aug 12, 2023	Actual Island Peak Demand ⁹	12:30	933 MW
Sun, Aug 13, 2023	Forecast Island Peak Demand		985 MW

Notes: 9. Island Demand / LIL / ML Exports (where applicable) is supplied by NLH generation and purchases, plus generation owned and operated by Newfoundland Power and Corner Brook Pulp & Paper (Deer Lake Power, DLP).